

MMFC Field Diagrams

Pilot Station coordinates

Pilot Station Line Centre 43°36'36.07"N 79°46'20.22"W

PS 1 43°36'35.95"N 79°46'20.79"W

PS 2 43°36'36.04"N 79°46'20.44"W

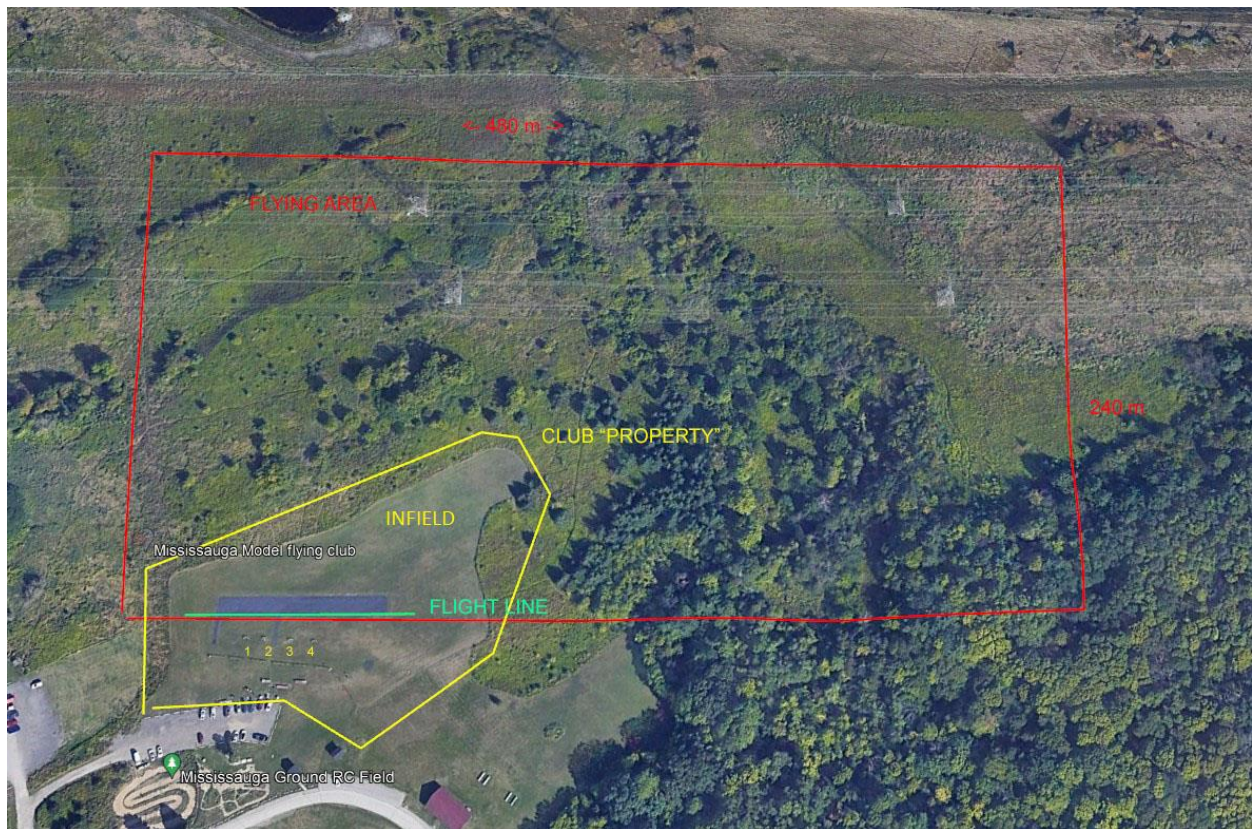
PS 3 43°36'36.13"N 79°46'19.96"W

PS 4 43°36'36.28"N 79°46'19.49"W

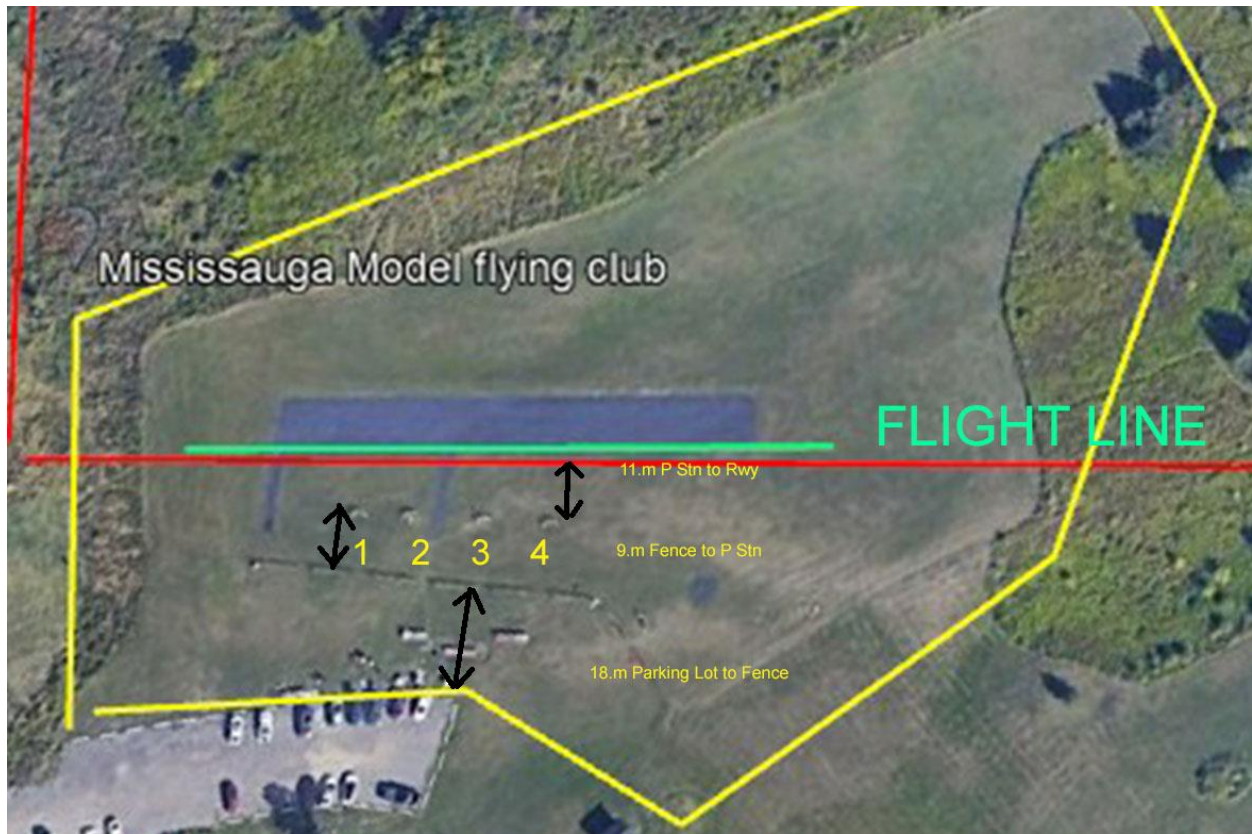
Centre of Runway

43°36'36.67"N 79°46'20.06"W

MAP of Field



MAP of Pits and Infield



Black arrows indicate infield dimensions, 18m from Parking lot to Pit fence, 9m from Pit fence to Pilot Stations, 11m from Pilot stations to flight line. Flight line is marked by the south edge of the runway.